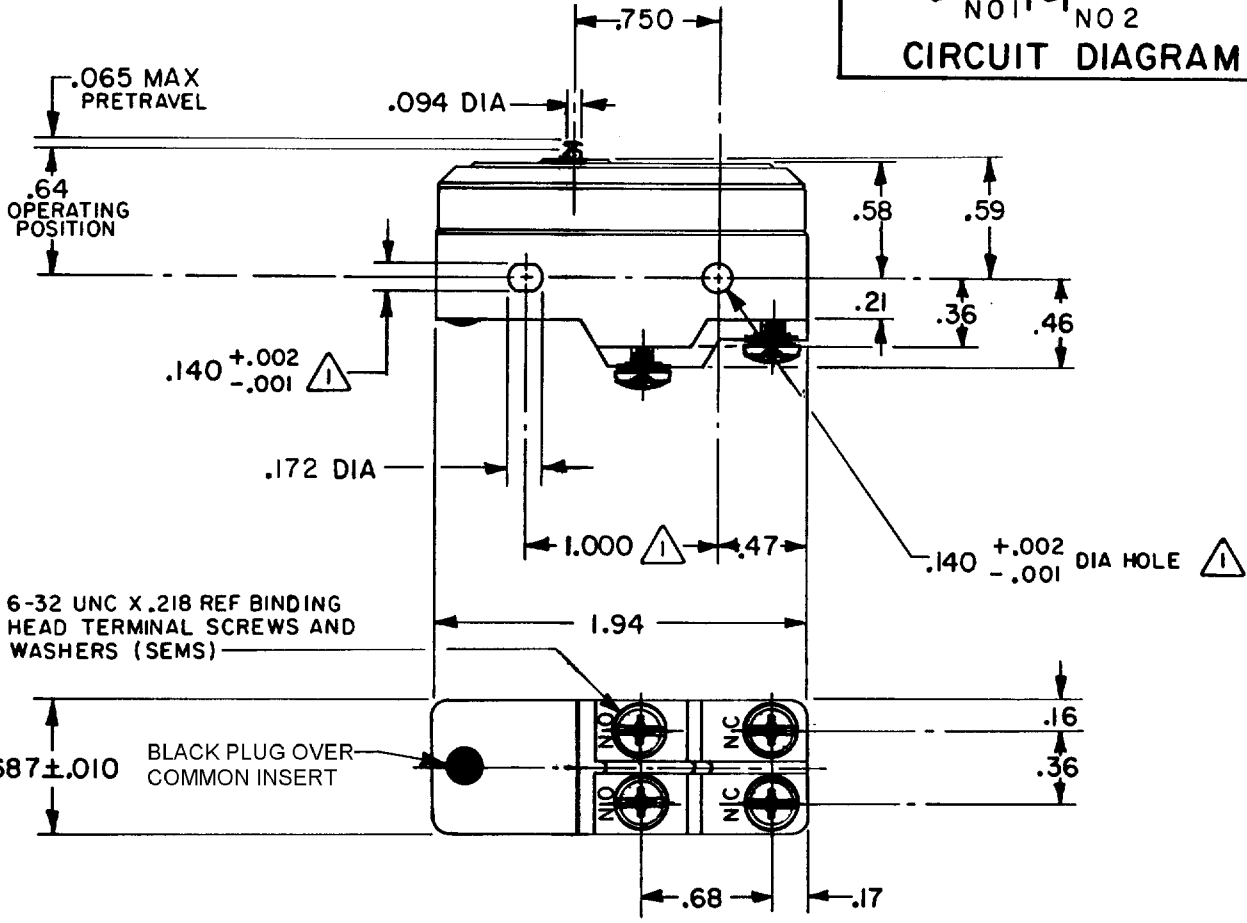


**CIRCUIT DIAGRAM**

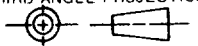


**NOTES**

- 1 - MOUNTING HOLES WILL ACCEPT PINS OR SCREWS OF .139 MAX. DIA ON 1.000±.002 CENTERS
- 2 - SUITABLE ONLY FOR APPLICATIONS IMPARTING A RAPID STROKE TO THE SWITCH PLUNGER

THIS DRAWING COVERS A PROPRIETARY ITEM AND IS THE PROPERTY OF MICRO SWITCH, A DIVISION OF HONEYWELL. THIS DRAWING IS NOT TO BE COPIED OR USED WITHOUT THE APPROVAL OF MICRO SWITCH.

THIRD ANGLE PROJECTION



<b>CHARACTERISTICS</b>	<b>ELECTRICAL DATA</b>	<b>SCALE FULL</b>			
		<b>DO NOT SCALE PRINT</b>			
OPERATING FORCE - - - - - 26- 38 OZ	CONTACT ARRANGEMENT SEE CIRCUIT DIAGRAM	<b>TOLERANCES</b>			
RELEASE FORCE - - - - - 10 OZ MIN	30 VOLTS D C RATING (SEA LEVEL TO 50,000 FT) INDUCTIVE - - - - - 25 AMP RESISTIVE - - - - - 30 AMP MAXIMUM INRUSH - - - - - 75 AMP BASED ON LIFE OF 25,000 OPERATIONS	APPLY TO DESIGN UNITS. CONVERSIONS ARE ONLY FOR REFERENCE. UNLESS NOTED, TOLERANCES ARE ±			
DIFFERENTIAL TRAVEL - - - .007 - .015	25A 125, 250, OR 480 VAC L58 3/4 HP 125 VAC, 1 1/2 HP 250 VAC 1A 125 VDC, 0.5A 250 VDC	DIM. mm	TOL. mm/in	DIM. in	TOL. mm/in
OVERTRAVEL - - - - - .010 MIN		NO PLACES X ONE PLACE X,X TWO PLACES X,XX THREE PLACES X,XXX ANGLES	1/.04 0.4/.016 0.157/.006	X,X 0.8/.03 X,XX 0.382/.018 X,XXX 0.13/.005	<input type="checkbox"/> SI METRIC <input checked="" type="checkbox"/> US CUSTOMARY
DESIGN UNITS		WEIGHT .067 LB			

**BA-3ST**  
 PAGE 1 OF 1  
**M**  
 DRAWING NUMBER  
 ISSUE 11  
 REVISIONS  
 CO 53551  
 15 SEPT 83  
 CO063005  
 J A P  
 5 APR 88  
 CO-59351-D  
 JWB  
 18 JUL 91  
 D 205503  
 G J W  
 1 MAY 02  
 RASTER  
 FO-52948-A  
 DRAWN  
 S L B 15 SEPT 83 CHECK  
 V E L 20 SEPT 83 CHECK  
 C H E C K  
 R E L E A S E N O .